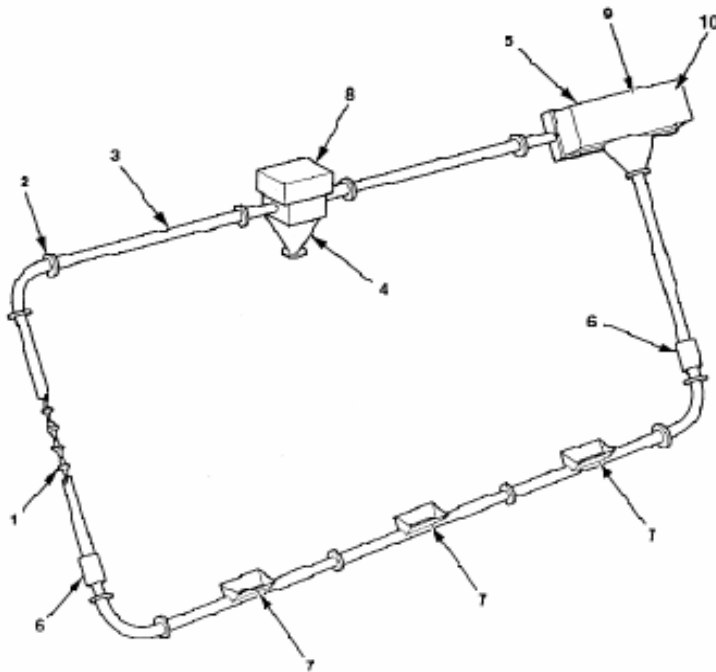


TUBULAR DRAG CLEAN BEDDING CONVEYING SYSTEM



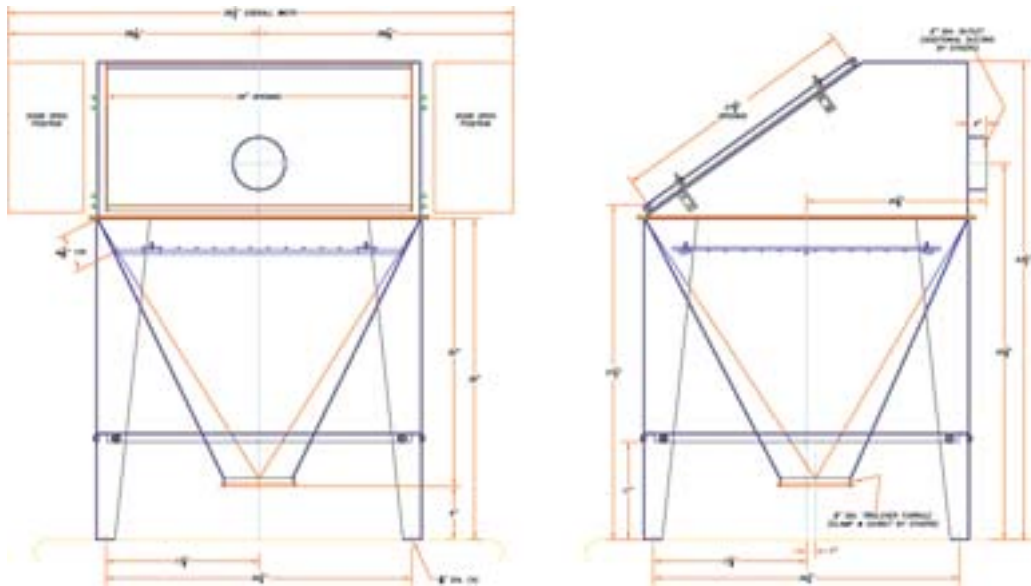
1. Flighted Chain
2. Casing Flange or Compression Coupling
3. Casing
4. Discharge Port
5. Drive Box
6. Access Port
7. Infeed Receiver
8. Vibrator
9. Reducer
10. Take-up Adjustment
11. Idler Box

Technical Details

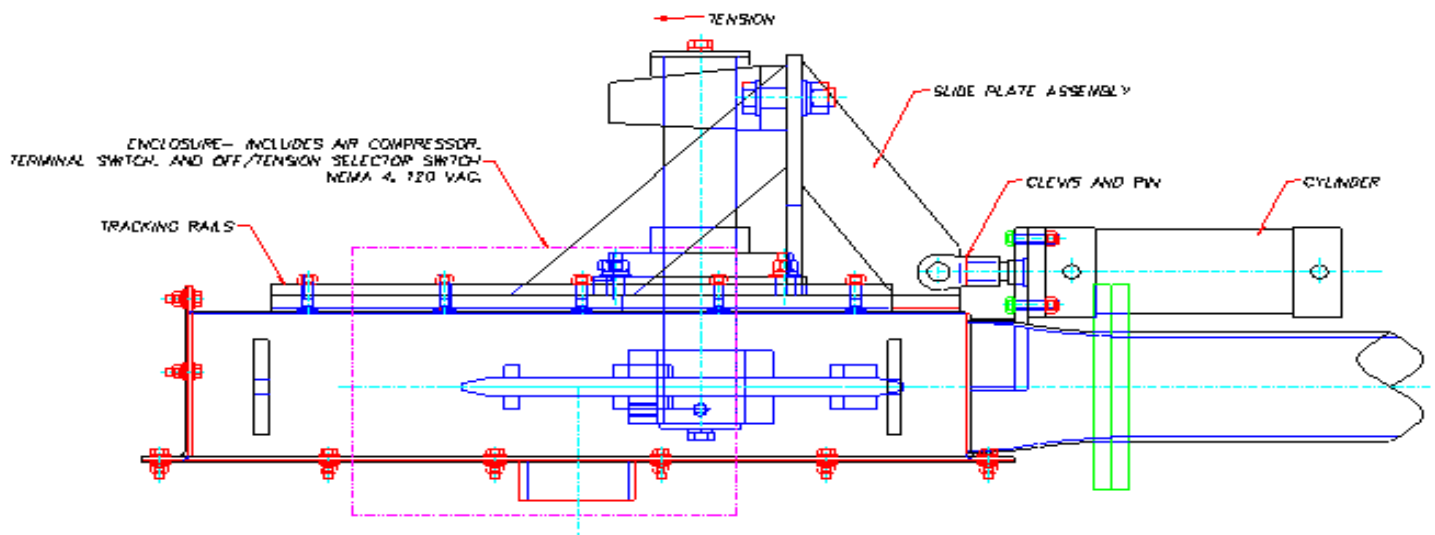
- Series #35 stainless steel sealed pin (center flighted) chain with neoprene washers. Assembled complete with 3³/₄" diameter #1900 U.H.M.W. polyethylene flights. Chain designed to start and stop under full load.
- Automatic chain tensioner, air over hydraulic with "end of travel" indicator. To include cylinder, clevis, panel, air compressor (when required) and fittings to plumb and operate the system.
- 4" standard schedule #40 conveyor stainless steel casing. Complete with gaskets and round mating male/female flanges at ends.
- Drive box, all-welded, fabricated of formed carbon steel, complete with inlet and outlet tubes and flight guides.
- Drive plate assembly, consisting of a carbon steel drive plate with a high efficiency, right-angle cycloidal input, bevel gear reducer, driven by a 230/460/575v/3ph/60hz TEFC, wash-down, NEMA C-face electric motor.
- 180° idler box (as needed), including bearings and idler sprocket, fabricated of mild steel.
- Flanged inlet, fabricated of mild steel.
- Inspection openings for chain installation and inspection, stainless steel construction.
- Self-cleaning discharge gate, air operated with flanged bottoms, stainless steel construction. Complete with connections for air-purge discharge.
- Electrical controls. Fixed speed, reversing, control panel to operate and protect the conveyor drive. Includes necessary transformers, motor starters, electronic shear pin, fused disconnect, and "on/off" push buttons. To be arranged in a NEMA 4 enclosure.

SPECIALTY EQUIPMENT DETAIL

Integral Dust Collection System



Automatic Chain Tensioner



Contact



6407-36 Avenue, Edmonton, AB, Canada T6L 1E9
M (780) 430-4225 T (877) 441-4225
F (780) 430-4229